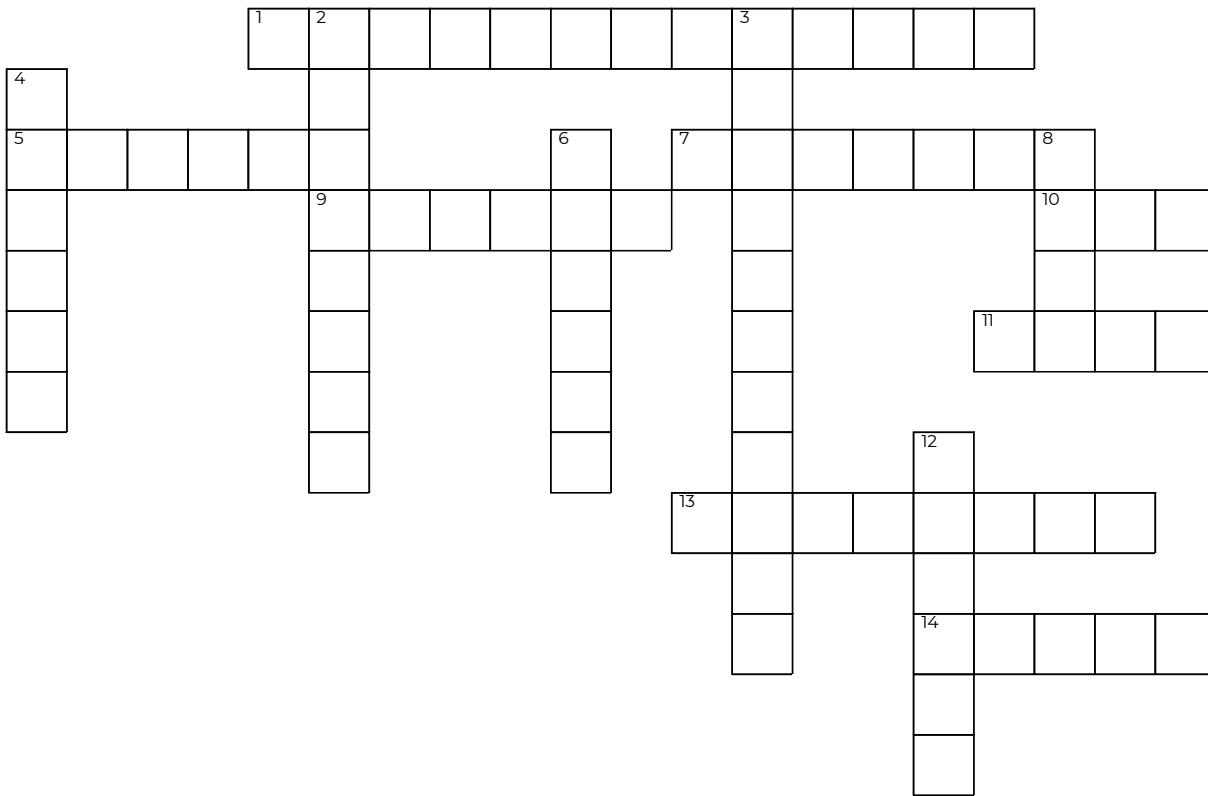


# Elianna and the Royal Feast

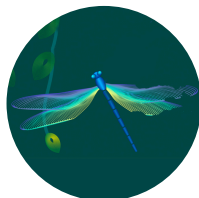


**Across:** →

**Down:** ↓

1. A quality Elianna had
5. Elianna lived what kind of life?
7. Elianna's first meal
9. What Elianna added to her braid
10. Those invited to the feast
11. How did Elianna fix her dress?
13. The spice added to the oatmeal
14. The number of guests at Elianna's table

2. Who is the feast for?
3. The name of the village
4. Activity Elianna did while planning
6. Where Elianna's table was placed
8. The item Elianna added to her dress
12. Where the feast is held



# Elianna and the Royal Feast

## Word Bank:

CASTLE

CHORES

ALL

CINNAMON

MEND

RIBBON

DETERMINATION

LACE

ARAMANTHINE

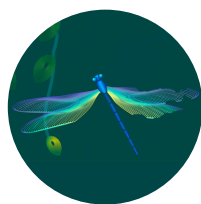
OATMEAL

CORNER

THREE

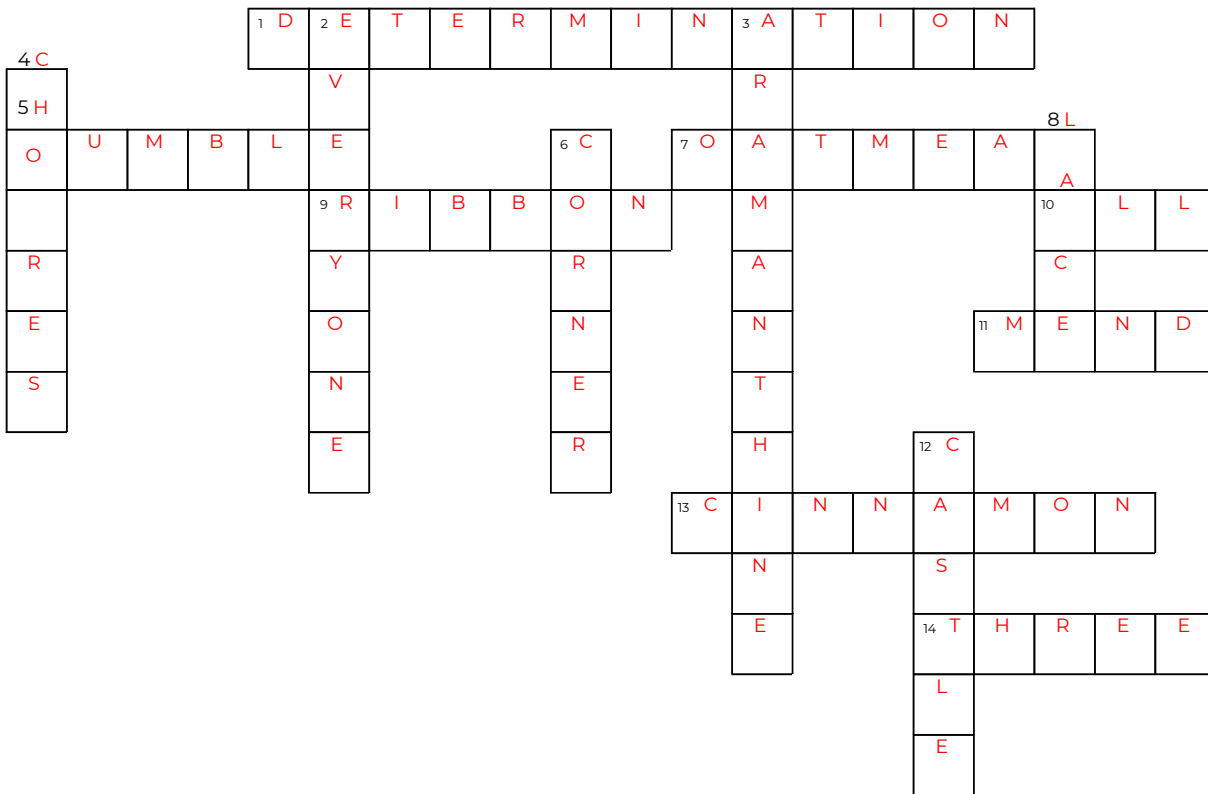
HUMBLE

EVERYONE



# SOLUTION

## Elianna and the Royal Feast



**Across:** →

1. A quality Elianna had
5. Elianna lived what kind of life?
7. Elianna's first meal
9. What Elianna added to her braid
10. Those invited to the feast
11. How did Elianna fix her dress?
13. The spice added to the oatmeal
14. The number of guests at Elianna's table

**Down:** ↓

2. Who is the feast for?
3. The name of the village
4. Activity Elianna did while planning
6. Where Elianna's table was placed
8. The item Elianna added to her dress
12. Where the feast is held

